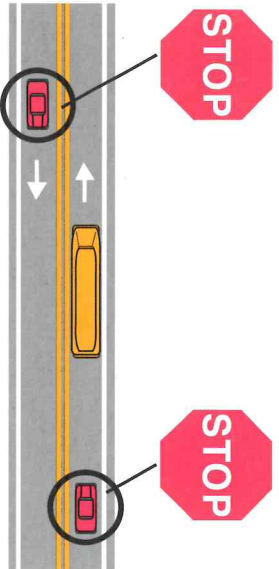
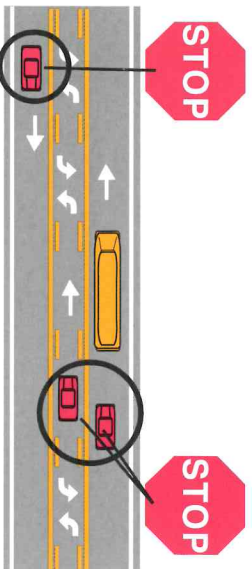


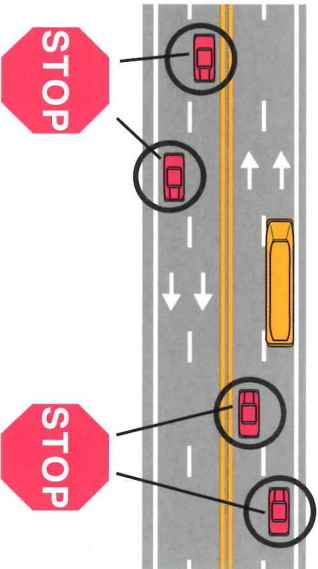
North Carolina SCHOOL BUS STOP LAW



Two-lane roadway: When school bus stops for passengers, all traffic from both directions must stop.

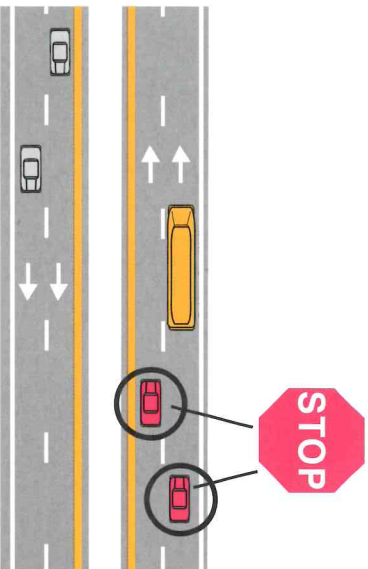


Two-lane roadway with a center turning lane: When school bus stops for passengers, all traffic from both directions must stop.

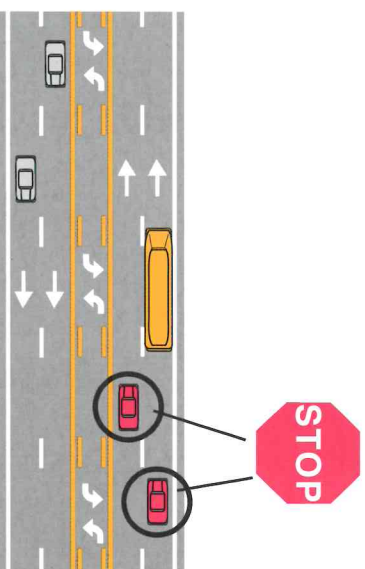


Four-lane roadway without a median separation: When school bus stops for passengers, all traffic from both directions must stop.

More information on reverse.



Divided highway of four lanes or more with a median separation: When school bus stops for passengers, only traffic following the bus must stop.



Roadway of four lanes or more with a center turning lane: When school bus stops for passengers, only traffic following the bus must stop.



**N.C. Division of Motor Vehicles
School Bus & Traffic Safety**
3140 Mail Service Center
Raleigh, NC 27699-3140
Phone: (919) 861-3109
Fax: (919) 715-3306
www.ncdot.gov/dmv

*100,000 copies of this public document were printed
at a cost of \$2,814, or \$0.02814 per copy. (05/13)*